



FOR A SAFER WORLD

NEWS BULLETIN

Jan-Feb 2020

International Society for
Integrated Disaster Risk Management

Conference of Interest

IDRiM 2020

(21-24 September; Kyoto, Japan)

IDRiM2020 will be held in Kyoto, Japan, in about 8 months! The programme will take on a special meaning and look back at two decades of applied and theoretical research on integrated disaster risk management. It will focus on **“Reviewing the Effectiveness of Integrated Disaster Risk Management Initiatives”**. For more information click [here](http://www.idrim.org/?p=4453). The expected important dates are:

Feb / 2020	Open Homepage Call for abstracts (special session, poster, oral, YSS)
Mid Apr / 2020	Special session and abstract submission deadline
Mid May / 2020	Early bird registration starts
End of May / 2020	Abstracts submission deadline
End of Jul / 2020	Early Bird registration finishes
Aug / 2020	Normal registration starts
Dec / 2020	Full paper submission deadline



<http://www.idrim.org/?p=4453/>

Other Item of Interest

NATECH 2020

(9-10 March; Osaka, Japan)

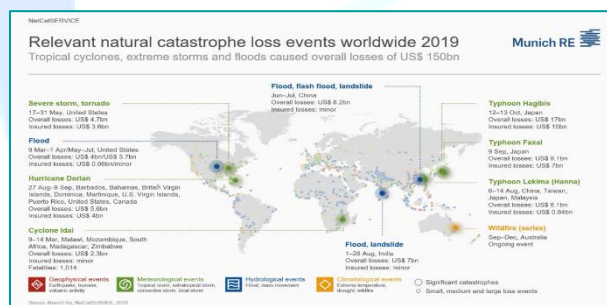
The 5th International Symposium on Natural and Technological Accident Risk Reduction at Large Industrial Parks (NATECH2020) aims at scientific exchange in the interdisciplinary fields by sharing experiences, risk assessments and innovative risk reduction measures on various accidents triggered by large-scale natural disasters at industrial parks. For more information, you may contact Prof. Shin-ichi AOKI (aoki@civil.eng.osaka-u.ac.jp).

Important dates	
31 January, 2020	Deadline for abstract submission (300-500 words)
10 February, 2020	Notification of acceptance
28 February, 2020	Deadline for full paper submission

Tropical cyclones causing billions in losses dominate Nat Cat picture of 2019

820 natural catastrophes caused overall losses of US\$ 150bn, which is broadly in line with the inflation-adjusted average of the past 30 years. A smaller portion of losses was insured compared with 2018: about US\$ 52bn. This was due, among other things, to the high share of flood losses, which are often not insured to the same extent as wind damage in most industrial countries.

<https://www.munichre.com/en/company/media-relations/media-information-and-corporate-news/media-information/2020/causing-billions-in-losses-dominate-nat-cat-picture-2019.html>



our News & Join the Conversation on Social Media

You have the opportunity to follow our news on *Twitter*, *Facebook* and *LinkedIn*. Join the conversation, share your latest research and discuss issues when applying disaster risk management solutions.

Click on the logos below or search for our IDRiM accounts



Secretariat - Kyoto University
Gokasho Uji, Kyoto, Japan
Tel: +81-774-38-4651
Fax: +81-774-38-4044

If you need more information or would like to submit content for the Monthly Bulletin, please contact: Matt Dorfstaetter [MATTHIAS.DORFSTAETTER@HOTMAIL.COM]